

# Thain Creek Daylighting Project



**Raincoast Applied Ecology**  
**2004**

# Background

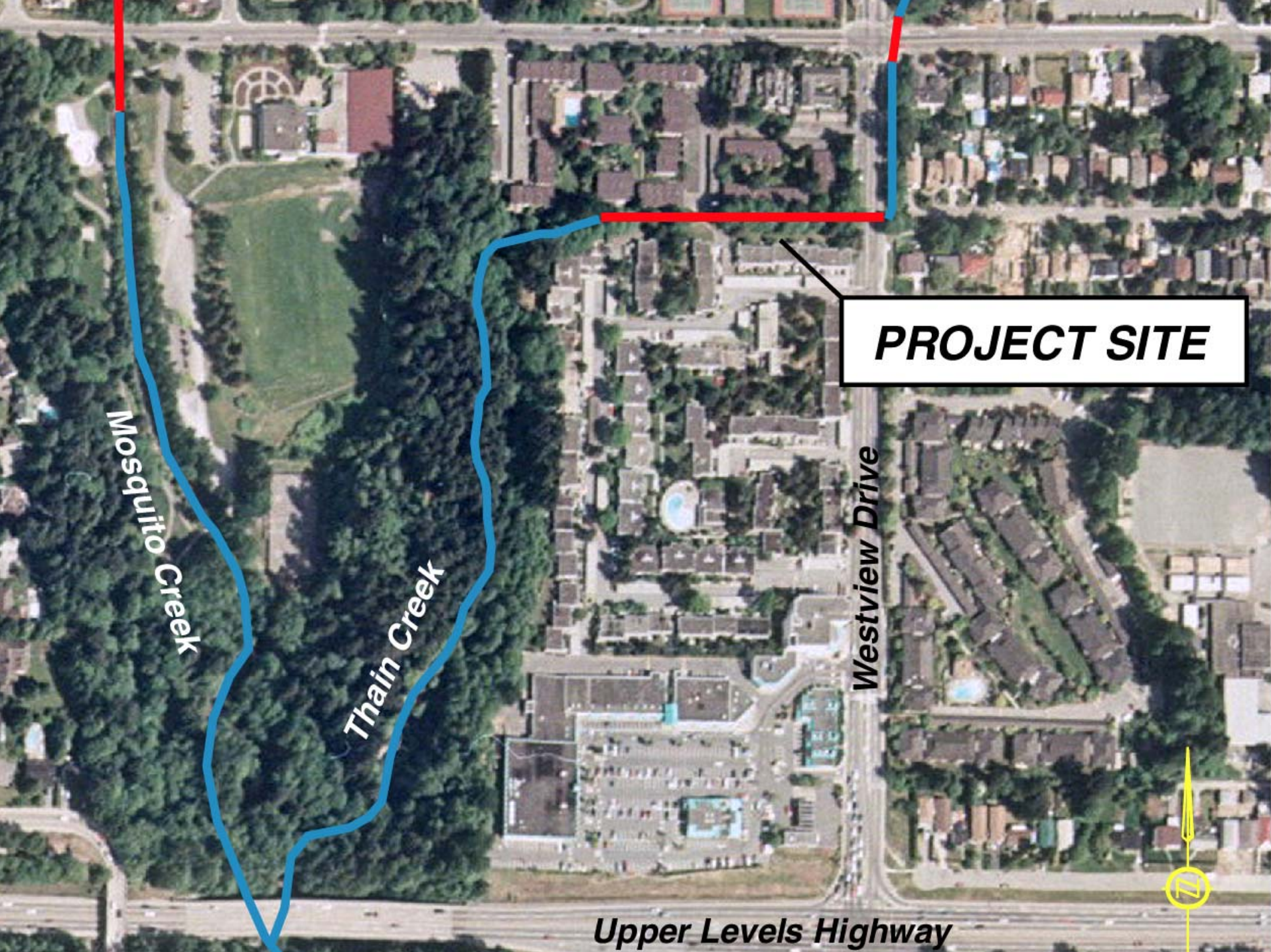
---

- Woodstave culvert constructed in 1958 was failing because of bed erosion.
- Culvert was impassable to fish and had very little habitat value.
- City of North Vancouver investigated potential solutions (piping, flumes and open channels). Input from community and adjacent residents.
- Design and supervision by KWL Associates Ltd., Coast River Environmental (Nick Page), and Lanarc.

# Design Features

---

- Design divided into inlet, replacement culvert, open channel with weirs and boulders, and bioengineered banks.
- Because of narrow corridor and adjacent properties, final design was a compromise between a stable channel and fish habitat. Typical fish habitat features were difficult to incorporate.
- Construction was undertaken between July and September 1999.



**PROJECT SITE**

*Mosquito Creek*

*Thain Creek*

*Westview Drive*

*Upper Levels Highway*





July 1999



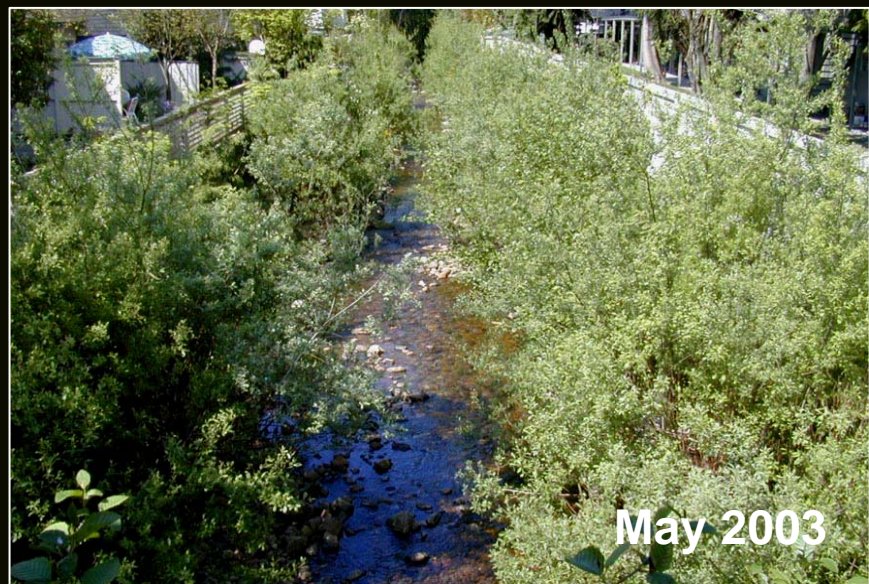
July 1999



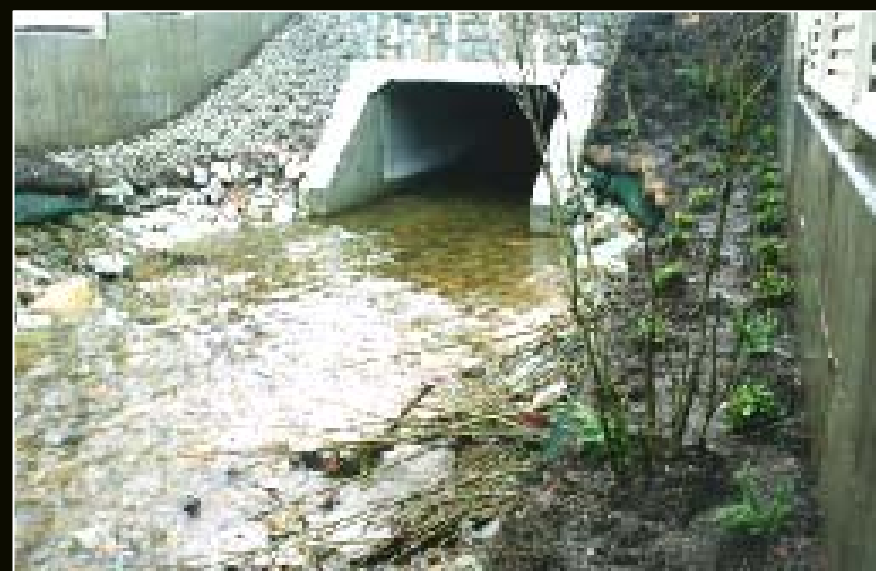
August 1999

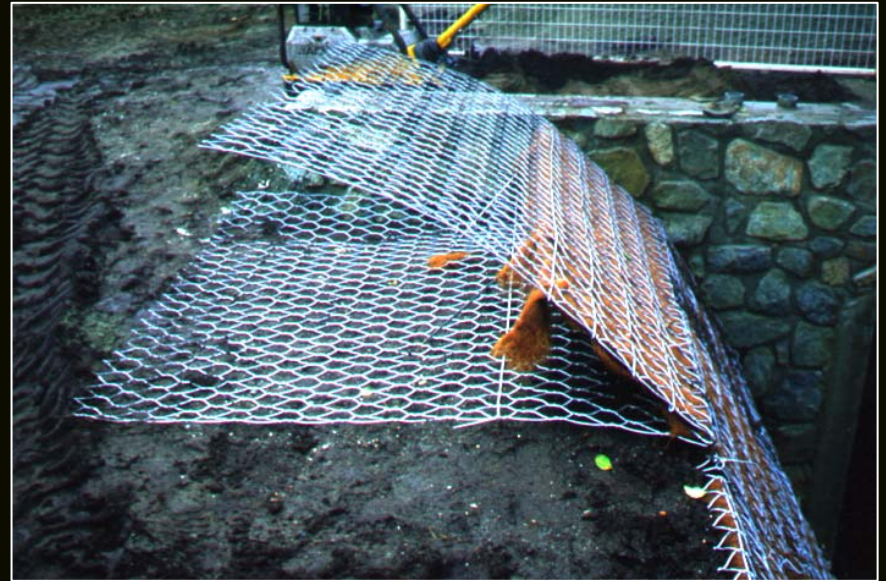


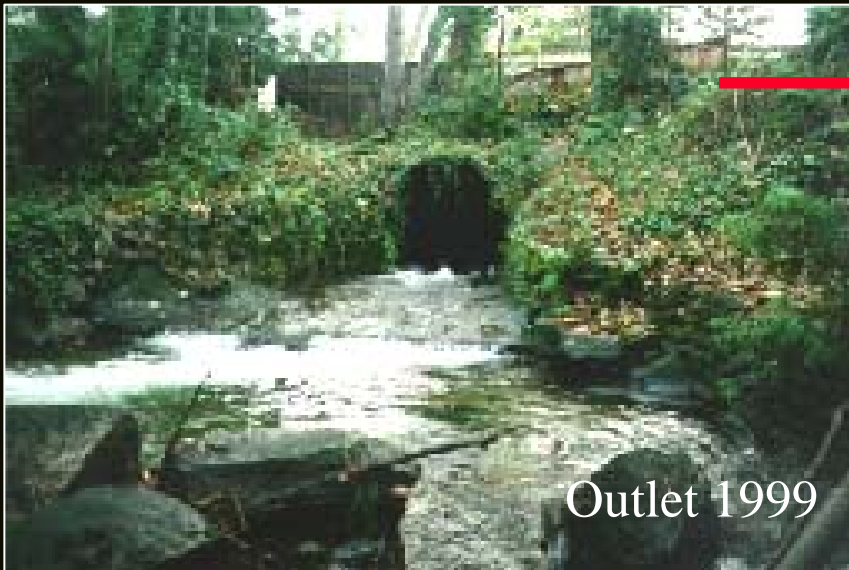
September 1999











# Acknowledgements

---

The Thain Creek Daylighting Project was managed by Tony Barber of the City of North Vancouver.

The project team included Dave Murray and Mike Currie (Kerr Wood Leidal Associates Ltd.), Pat Harrison and David Reid (Lanarc), and Nick Page and John Millar of (Coast River Environmental Services).